
KONDO USB Driver Install Manual

KO Driver 2015

Ver.3

近藤科学株式会社

Kondo Kagaku Co.,LTD.



April 23, 2021 Ver.3

Introduction

Thank you for using a KONDO USB device. Please read through this manual to ensure proper use of the device. It is suggested that you read this manual together with the hardware manuals.

Specifications

- Driver Version : Ver.6.0 Rev.20150530
- OS :
 - Windows 10 / Windows 10 x64
 - Windows 8(8.1) / Windows 8(8.1) x64
 - Windows 7 / Windows 7 x64

KONDO Device Compatibility (Device driver files in the KO_Driver_2015 folder support the following KONDO devices (as of Apl. 2021))

Table 1 List of Compatible Devices and Device IDs

Compatible Devices	VID (Vendor ID) Type	VID No.	PID No.	Device Name on Device Manager
ICS USB Adapter	Other	165C	0001	ICS USB ADAPTER
Serial USB Adapter	Other	165C	0002	SERIAL USB ADAPTER
ARC Type4	Other	165C	0003	ARC Type4
2.4G USB Band Monitor	Other	165C	0004	2.4GHz USB Band Monitor
ICS USB Adapter HS	Other	165C	0006	ICS USB ADAPTER HS
Serial USB Adapter HS	Other	165C	0007	SERIAL USB ADAPTER HS
Dual USB Adapter HS	Other	165C	0008	DUAL USB ADAPTER HS
RS485 USB/ Serial Conversion Adapter	Other	165C	0009	RS485 USB/SERIAL CONVERTER

Disclaimer

- All legal rights associated with this manual, including copyrights, logo designs, and a portion of the icon designs, belong to Kondo Kagaku Co., Ltd.
- The compatibility information contained in this manual is as of June 2015. The content of this manual and driver file compatibility information may change without prior notice.
- It is prohibited to redistribute this manual and driver software in large, unspecified numbers regardless of the format. This manual and driver software may not be sold, lent or leased without the permission of the copyright holder.
- Kondo Kagaku Co., Ltd. shall bear no responsibility for any damages that may occur as a result of installing and/or using the driver software.

Inquires Kondo Kagaku Co., Ltd. Service Dept.

17-7 Higashi-Nippori 4 chome, Arakawa-Ku, Tokyo 116-0014

Phone: +81-3-3807-7648 (direct to Service) *Excluding weekends and holidays 9:00-12:00 a.m. and 1:00-5:00 p.m.

Support email address: support@kopropo.co.jp (Responses may take a certain amount of time.)

Installing the Driver Software

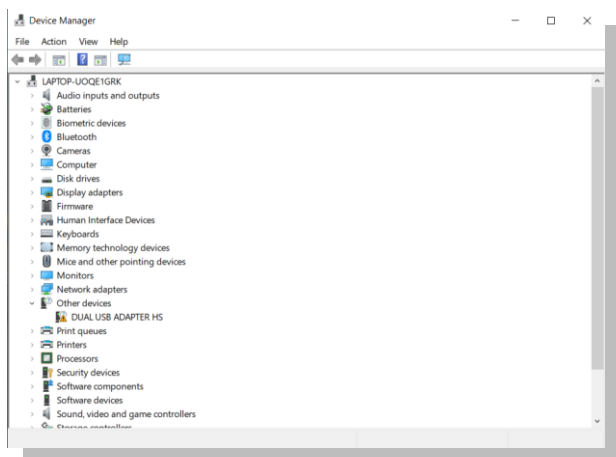
Before Installing

- This manual explains installation procedures for the KO_Driver_2015 driver file using the example of a KONDO serial USB adaptor or dual USB adaptor, but the same procedures can be used to install all compatible KONDO USB devices listed in Table 1 “List of Compatible Devices and Device IDs.”
- The KO_Driver_2015 device driver installs two types of driver files. First, the USB bus driver is installed, and then the USBport driver is installed.
- The KO_Driver_2015 device driver may be downloaded from the following two sites.
 - ◆[From KONDO Site]: Information for the English -> Support -> Software -> KO Driver 2015
 - ◆[From KO PROPO Site]:SUPPOR tab -> Software tab -> KO Driver 2015
- If you have installed a previous version of KO_Driver, **first uninstall old drivers**. To uninstall, refer to the “Uninstall Drivers (All Versions)” section on p. 6.

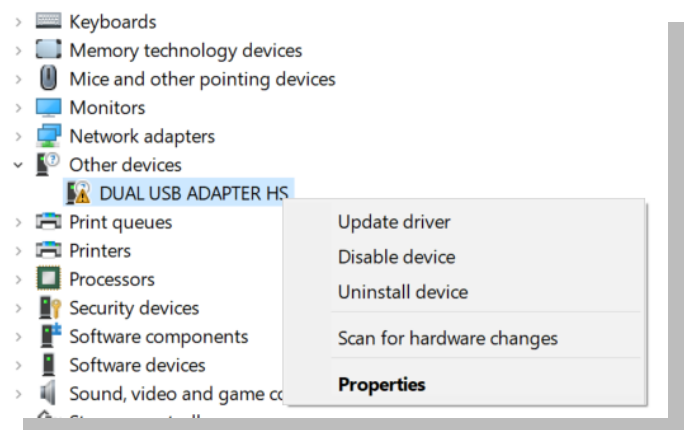
Windows 10

Install Driver File

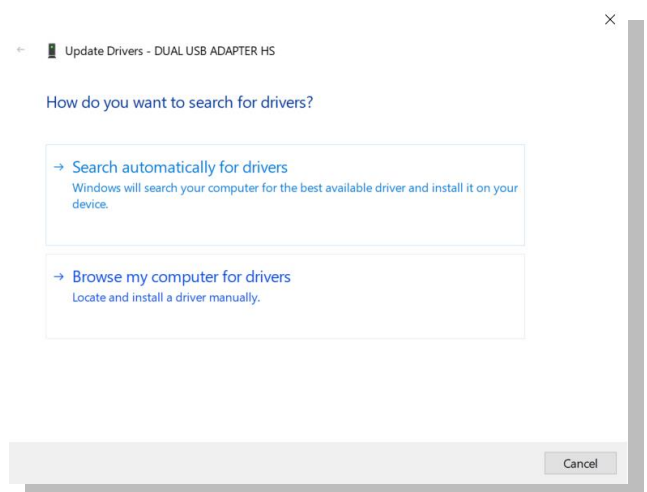
1. Unzip the downloaded KO_Driver_2015 file beforehand, and save it in an appropriate folder.
2. Insert the device into the USB port.
3. Launch Device Manager. (It may be launched using any of the following methods.)
 - ◆Move the mouse over the button in the lower left-hand corner of the screen (Start button) and right-click. Select “Device Manager” from the displayed menu.
 - ◆Press the “X” key while holding down the “Windows” key on the keyboard.
4. Confirm that there is a device with an exclamation mark (!) displayed in the “Other devices” category. (In the screen example, it is Dual USB ADAPTER HS)



5. Right-click the above device, and click “Update Driver”.



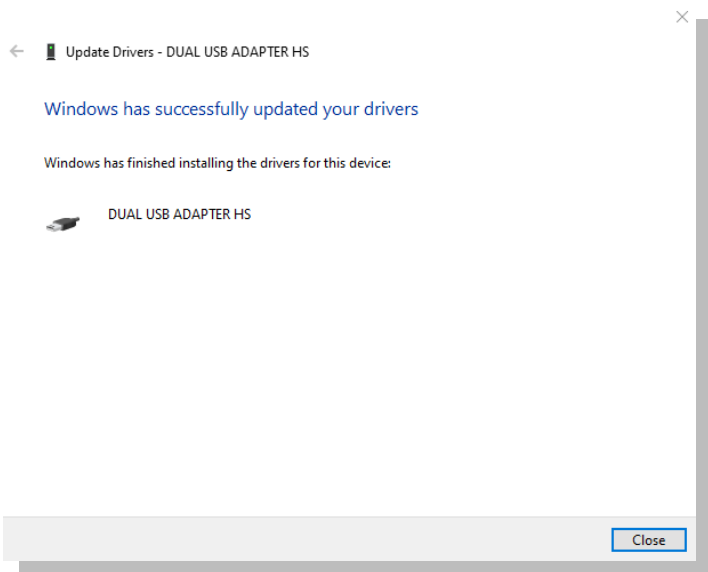
6. The dialogue for updating driver software will be displayed. Select “Browse my computer for drivers.”



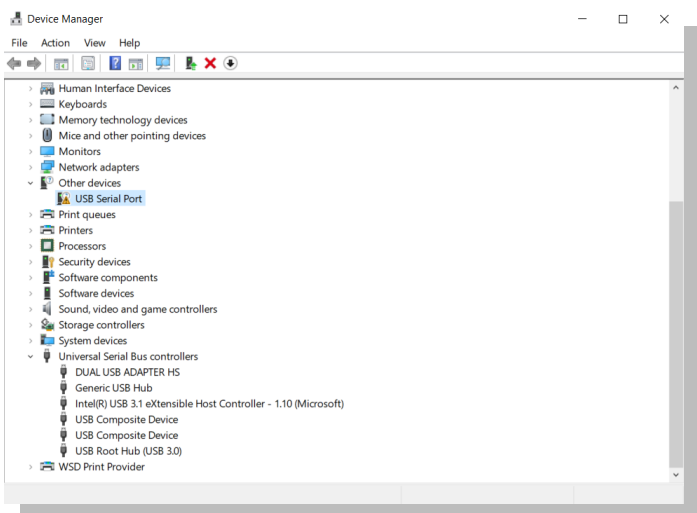
- 7 . When the “Browse for driver software on your computer” dialogue is displayed, click the “Browse” button and specify the KO_Driver_2015 folder. Confirm that there is checkmark next to “Include subfolders,” and click “Next.”

- 8 . Driver installation will begin.

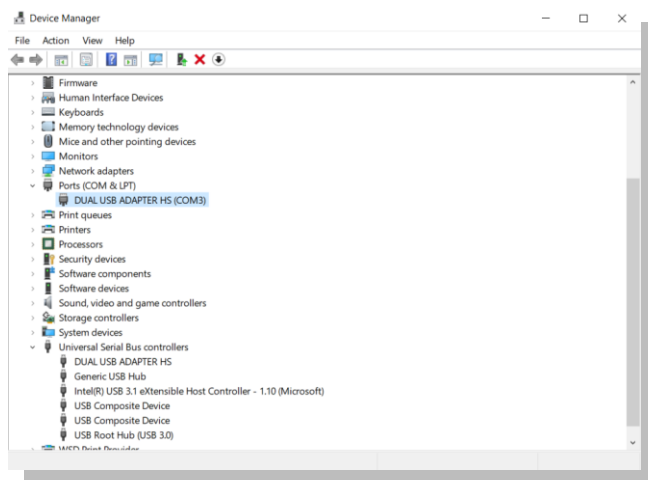
- 9 . When installation is completed, “Windows has successfully updated your driver software” will be displayed, and the name of the installed device will be displayed. (In the screen example, “DUAL USB ADAPTER HS”)



- 10 . Next, a device with an exclamation mark (!) will be displayed as before in the Device Manager. Repeat the procedures starting from step 5 and just as before install the driver software

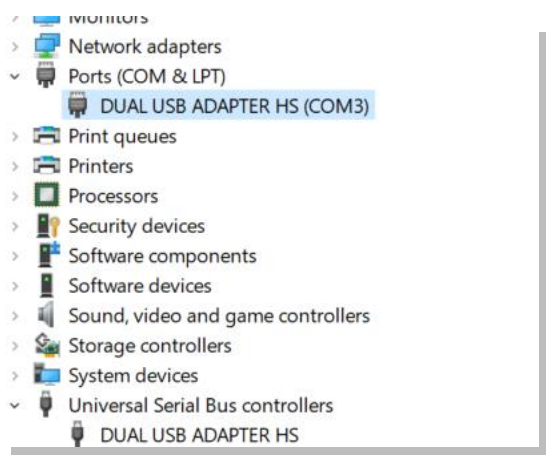


- 11 . Driver installation is complete when both types are installed, the USB bus driver and USB port driver



Device Confirmation and Reminders

- 1 . When driver installation is complete, confirm the device port number.
- 2 . Launch Device Manager following the instructions in step 3 above.
- 3 . In Device Manager, confirm that the name of the installed device is in the Universal Serial Bus Controller section. And, confirm that the name of the installed device and COM port number are in the Port (COM and LPT) section.

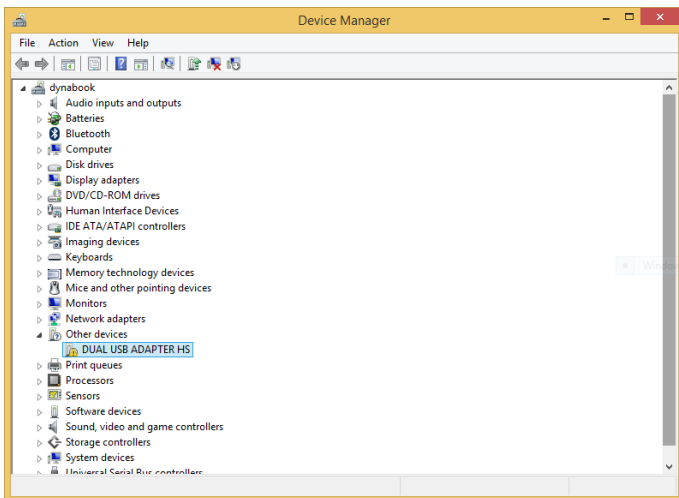


(In the example, the device name is “DUAL USB ADAPTER HS” and the COM port number is 3 (COM3). The port number differs depending on your computer, so it may not always be COM3.)

Windows 8(8.1)

Install Driver File

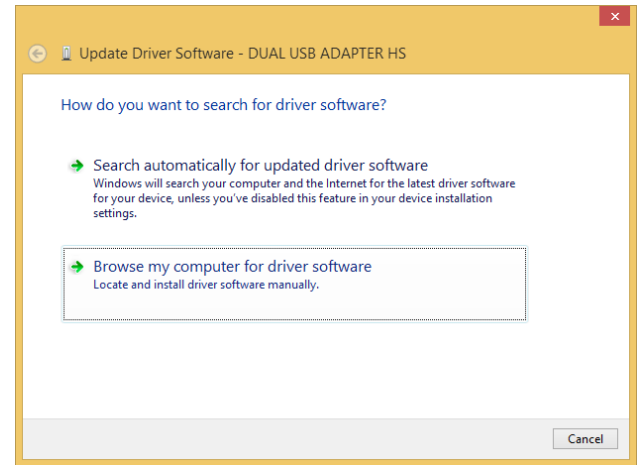
1. Unzip the downloaded KO_Driver_2015 file beforehand, and save it in an appropriate folder.
2. Insert the device into the USB port.
3. Launch Device Manager. (It may be launched using any of the following methods.)
 - ◆ Move the mouse over the button in the lower left-hand corner of the screen (Start button) and right-click. Select “Device Manager” from the displayed menu.
 - ◆ Press the “X” key while holding down the “Windows” key on the keyboard.
 - ◆ Launch Device Manager by selecting “Settings” → “PC info” from the Charms.
4. Confirm that there is a device with an exclamation mark (!) displayed in the “Other devices” category. (In the screen example, it is Dual USB ADAPTER HS)



5. Right-click the above device, and click “Update Driver Software.”

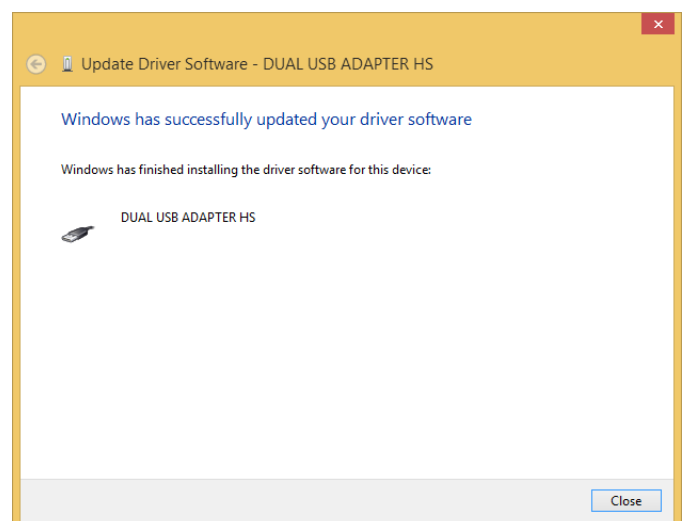
6. The dialogue for updating driver software will be displayed. Select “Browse my computer for driver software.”

7. When the “Browse for driver software on your computer” dialogue is displayed, click the “Browse” button and specify the KO_Driver_2015 folder. Confirm that there is checkmark next to “Include subfolders,” and click “Next.”

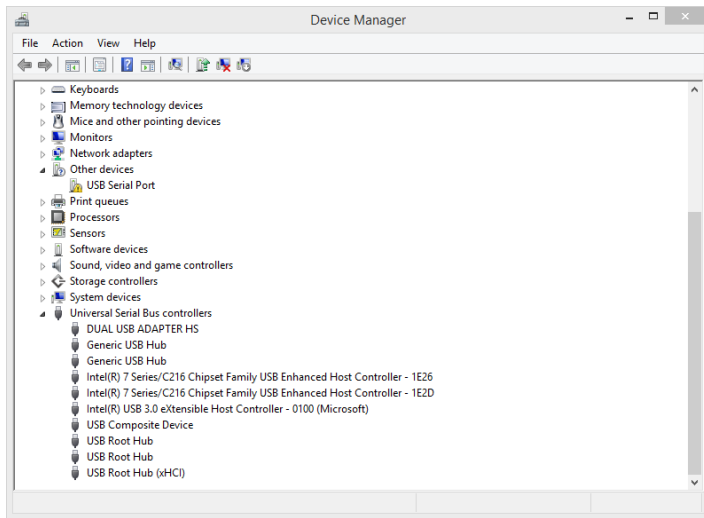


8. Driver installation will begin.

9. When installation is completed, “Windows has successfully updated your driver software” will be displayed, and the name of the installed device will be displayed. (In the screen example, “DUAL USB ADAPTER HS”)



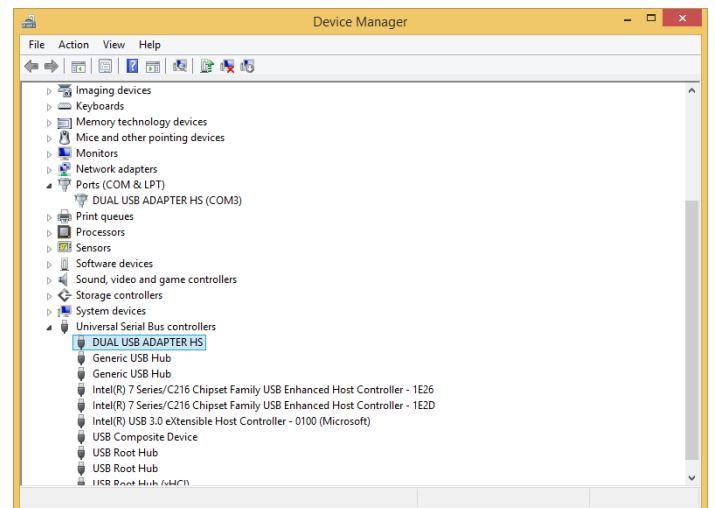
- 10 . Next, a device with an exclamation mark (!) will be displayed as before in the Device Manager. Repeat the procedures starting from step 5 and just as before install the driver software.



- 11 . Driver installation is complete when both types are installed, the USB bus driver and USB port driver.

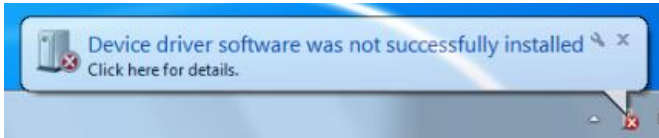
Device Confirmation and Reminders

- 1 . When driver installation is complete, confirm the device port number.
- 2 . Launch Device Manager following the instructions in step 3 above. ◦
- 3 . In Device Manager, confirm that the name of the installed device is in the Universal Serial Bus Controller section. And, confirm that the name of the installed device and COM port number are in the Port (COM and LPT) section.
(In the example, the device name is “DUAL USB ADAPTER HS” and the COM port number is 3 (COM3). The port number differs depending on your computer, so it may not always be COM3.)

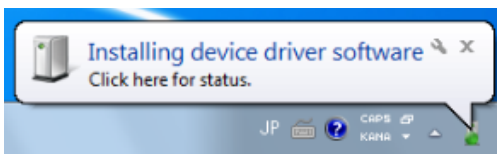


Windows 7

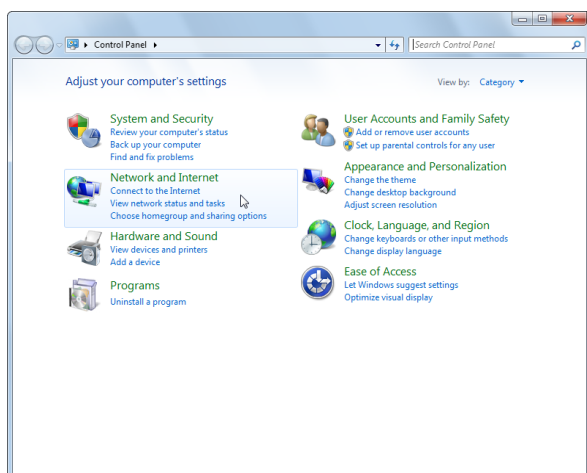
1. Unzip the downloaded KO_Driver_2015 file beforehand, and save it in an appropriate folder.
2. When the device is inserted into the USB port, the computer will automatically search for the driver, a message will appear on the lower-right. Click the balloon help to display the details.



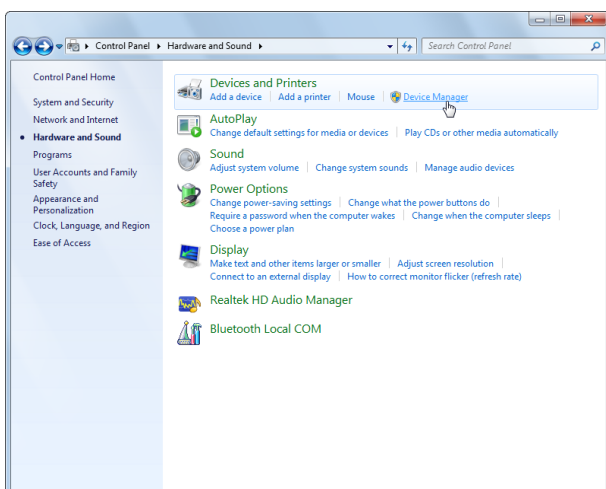
3. After a few moments, the driver file will not be found, so a failure message will appear.



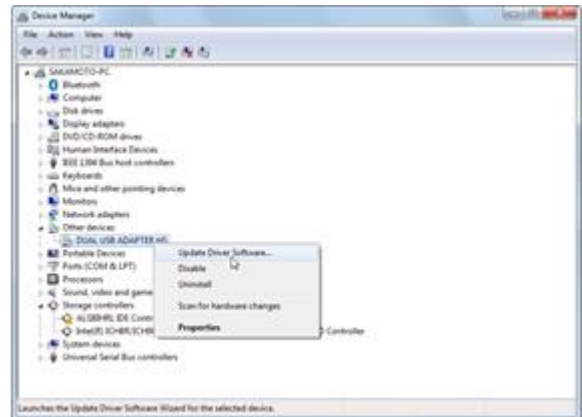
4. Open Start Menu -> Control Panel -> Hardware and Sound.



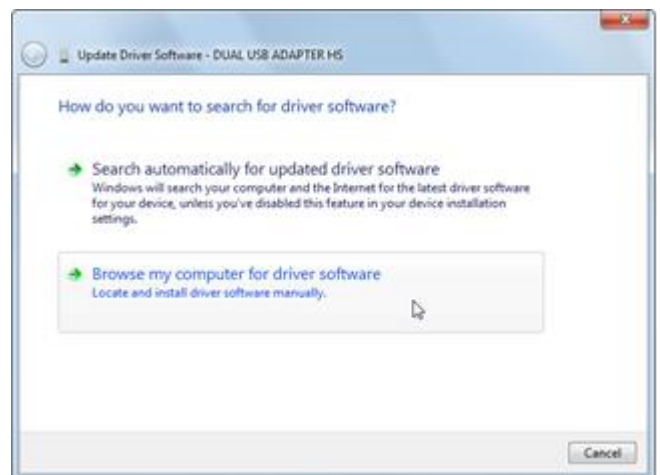
5. Next, open the Device Manager.



6. In the Device Manager, there will be a device displayed with a yellow triangle. Right-click and select "Update Driver Software (P)."



7. The dialogue for updating driver software will be displayed. Select "Browse my computer for driver software."

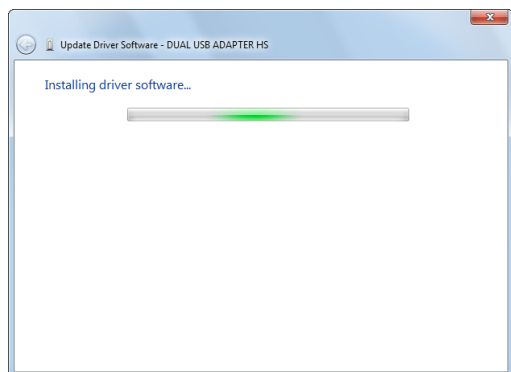


8. When the "Browse for driver software on your computer" dialogue is displayed, click the "Browse (R)" button and specify the "KO_Driver_2015" folder. Confirm that there is a checkmark next to "Include subfolders," and click the "Next" button.

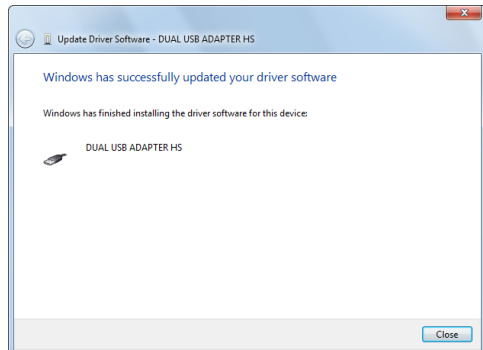
9. When the driver software is found, the Windows Security dialogue will be displayed, so click “Install.”



10. Driver software installation will begin.



11. When installation is complete, “Windows has successfully updated your driver software” will be displayed. The name of the device installed will be displayed in the dialogue/

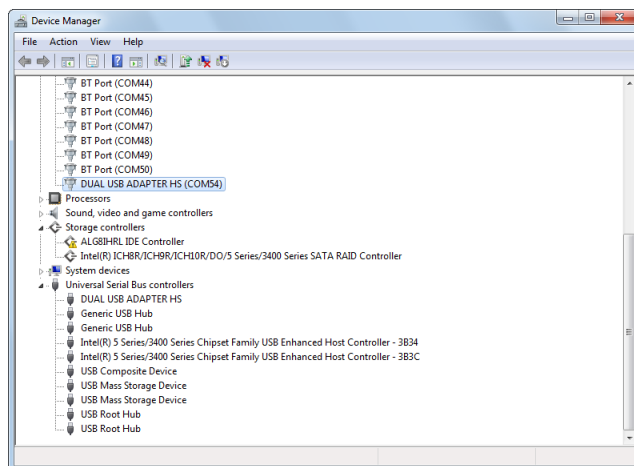


12. Next, after Windows begins searching for the USB port driver, a device will appear with a yellow triangle just as before in the Device Manager. Repeat the procedures you just performed starting at step 6 and install the driver software just as before.

13. When the USB bus driver and USB port driver are installed, driver installation is complete.

● Confirm Device

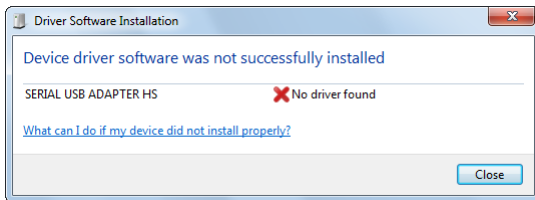
- Once the drivers are installed, confirm the device port number. Refer to installation steps 4 and 5, and open the Device Manager.
- In Device Manager, confirm that the name of the installed device is in Universal Serial Bus Controller. Also, confirm that the name of the installed device is in the Port (COM and LPT) section, and confirm the COM port number (in the example, DUAL USB ADAPTER HS is set as COM54).



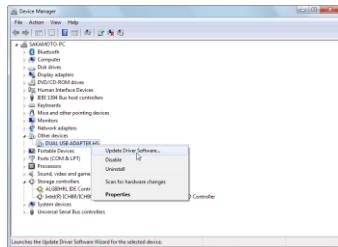
If the Driver Fails to Install

If KO Driver installation fails, use Device Manager and install it with the following procedures.

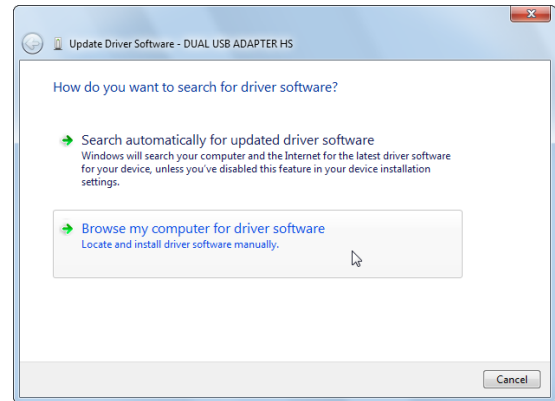
1. If device installation fails, the following warning will be shown (the screen is from Windows 7).



2. Open Device Manager on the Control Panel, and right-click the device name with the yellow warning icon displayed.
3. From the right-click menu, select "Update Driver Software."



4. Select "Browse my computer for driver software."
5. "Found New Hardware Wizard" will launch, and when the "Browse for driver software on your computer" is displayed, press the "Browse (R)" button and specify the "KO_Driver_2015" folder. When you've specified the folder, press the "Next" button, and from there, install the software following the same procedures.



Uninstall Drivers (All Versions)

1. Remove the KONDO USB device from your computer.
2. Double-click "CDMuninstallerGUI.exe" in the KO_Driver_2015 folder to open the file.
3. Enter "165C" in the Vendor ID box and the PID number of the device to be uninstalled in the Product ID box. For the PID number, refer to Table 1 "List of Compatible Devices and Device IDs" on p. 2 of this guide. The figure at right shows an example when uninstalling "SERIAL USB ADAPTER."
4. After entering the Vendor ID and Product ID boxes, press the "Add" button and register the device to be uninstalled. If uninstalling multiple device drivers, add to the list by repeating steps 3 and 4.
5. Press the "Remove Devices" button at the bottom of the window. When the installed devices are found, the uninstall will begin. When "Device removed from system." is displayed, the uninstall is complete. It may take a few moments to find the devices.

